

# Firmware Download Operation Guide

## Table of Contents

Revision History .....	1
1、 Document Overview .....	1
2. Document Description .....	1
3. Operating Steps.....	1

## Revision History

V1.0 (2024-10-21) Initial Version

## 1、 Document Overview

This document describes how to use the firmware download tool to update the device firmware version.

## 2. Document Description

Extract the "Pet Detection Installation Software-YQ-PS400.rar" file to the desktop.

The directory structure after extraction is as follows:

Pet Detection Installation Software-YQ-PS400

Trendi-EQ-PS400-XXX

Firmware Download Operation Guide.doc

Among them:

Trendi-EQ-PS400-XXX Represents the current firmware version number.

## 3. Operating Steps

(1) Go to the official website's download center and download the "Xianqu Medical Technology Firmware Download Tool."

(2) Extract Updater.zip to the desktop.:

➤ The directory structure after extraction is as follows.:

Updater

Trendi Indicates the update tool.

Driver Represents the USB driver directory.

(3) Install the USB driver (this step can be skipped if the USB driver is already installed on the computer; if unsure, you can reinstall it without any impact).

➤ Open the USB driver directory and click on the CH343SER.exe file to install it.

➤ Restart the computer after installation.

(4) Connect the USB cable between the computer and the device.

(5) Turn on the device power switch.

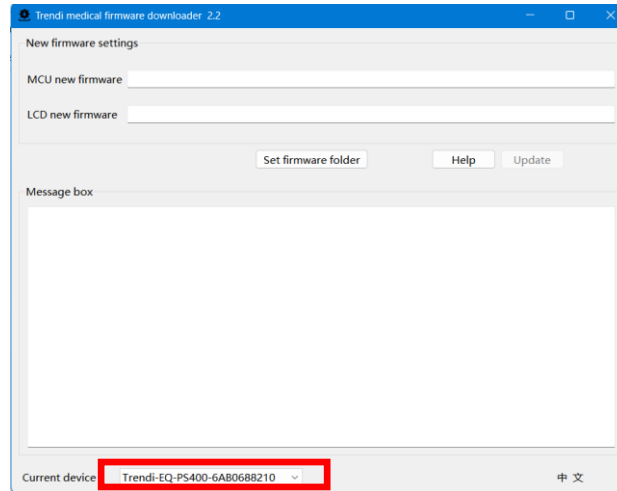
(6) Open the update tool software.

➤ Navigate to the Updater---Trendi directory and double-click on "trendi\_fw\_downloader.exe" to open the software.

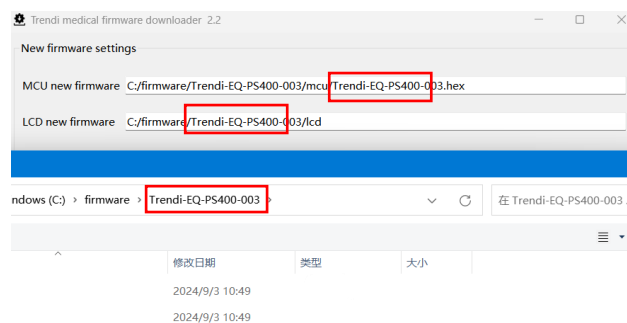


trendi\_fw\_downloader.exe

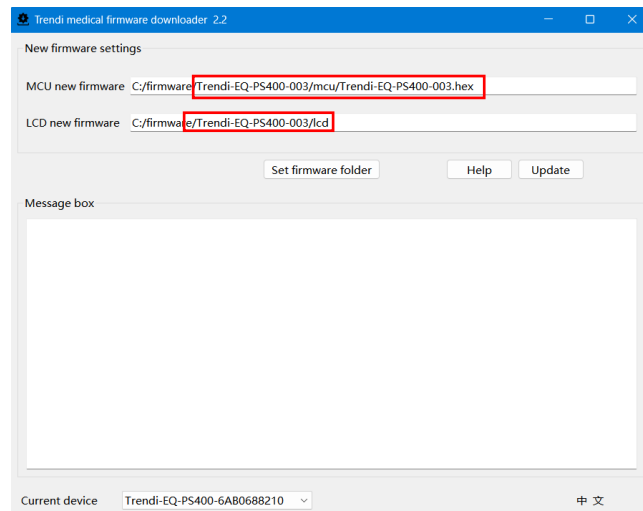
- After opening the software, the device number will appear in the current device list at the bottom, as shown in the following image. (If the device does not appear, please check and repeat steps 3 to 5.)



- Click on "Set Firmware Directory," select the firmware directory folder, which should be in the format Trendi-EQ-PS400-XXX. The selected version directory must match the type of the current device on the main interface in order to proceed with the download.



- After selecting the desired firmware version directory, it will appear as shown in the image.



- Click the "Update" button, wait for the process to complete, and then restart the device.